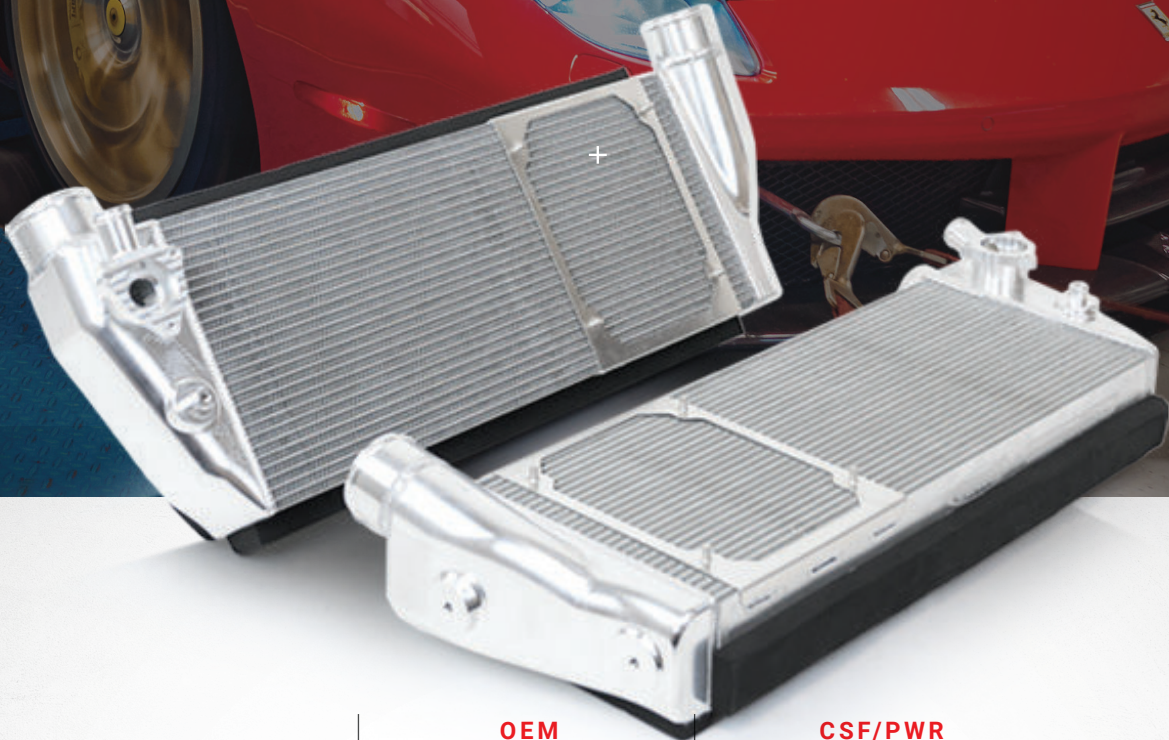


WORLD EXCLUSIVE

FERRARI 488 / PISTA / F8



CSF PART
**#8210/
 #8210B**

	OEM	CSF/PWR
# OF TUBES	18	27
TUBE HEIGHT	4MM	3MM Rolled Tube
FIN HEIGHT	7MM	4.85MM
WEIGHT	11 LBS	9.35 LBS
DESIGN	Stamped Aluminium Braze w/ Gasket	100% TIG Welded CNC Billet End Tanks

MSRP/MAP
\$5,995.00
 USD

HIGH PERFORMANCE INTERCOOLERS

THE BIG POWER AND HEAT-SOAK SOLUTION

- Sold as a pair (Left & Right Intercoolers)
- Eliminates Heat Soak and Lower Intake Air Temperatures (IATs) for Maximum Performance in High-Performance and Race Conditions
- Formula-1 Performance Grade Cores by PWR (2-Row Cores features Rolled Tubes w/ Inner Fins)
- Made in the USA at PWR North America
- 100% TIG Welded CNC Machined Billet End Tanks for Maximum Strength & Durability
- OEM Style Inlet/Outlet Connections for Precise Fitment With All OEM Components
- Available in Black Thermal Dispersion Ceramic Coating upon request
- R&D and Performance Testing by Industry-Leading Tuning Companies M-Engineering and World Motorsports
- Precision machined integrated BPV/BOV connection
- High density foam installed for OEM Fit & Finish
- Integrated OEM Style Fan Shroud
- True Plug-and-Play "Drop-in Fit" Installation - Requires Absolutely No Modifications